

# 2019 PBA JOHNNY PETRAGLIA 37



Oil Pattern Distance: **37 Feet**      Reverse Brush Drop: **37 Feet**      Oil Per Board: **50 uL**  
 Forward Oil Total: **16.35 mL**      Reverse Oil Total: **13.5 mL**      Volume Oil Total: **29.85 mL**  
 Forward Boards Crossed: **327 Boards**      Reverse Boards Crossed: **270 Boards**      Total Boards Crossed: **597 Boards**

	Start	Stop	Loads	Speed	Crossed	Start	End	Feet	T.Oil
1	2L	2R	1	14	37	0.0	0.0	0.0	1850
2	4L	4R	1	18	33	0.0	2.5	2.5	1650
3	5L	5R	4	18	124	2.5	12.7	10.2	6200
4	8L	8R	4	18	100	12.7	22.9	10.2	5000
5	15L	15R	3	22	33	22.9	32.2	9.3	1650
6	2L	2R	0	22	0	32.2	37.0	4.8	0

Navigation: Forward Reverse More

	Start	Stop	Loads	Speed	Crossed	Start	End	Feet	T.Oil
1	2L	2R	0	22	0	37.0	32.0	-5.0	0
2	15L	15R	2	18	22	32.0	26.9	-5.1	1100
3	8L	8R	4	18	100	26.9	16.7	-10.2	5000
4	8L	7R	2	14	52	16.7	12.8	-3.9	2600
5	5L	6R	1	14	30	12.8	10.9	-1.9	1500
6	4L	4R	2	14	66	10.9	7.0	-3.9	3300
7	2L	2R	0	14	0	7.0	0.0	-7.0	0

Navigation: Forward Reverse More

Conditioner:  
Type In or Select  
One

TransferType:  
Type In or Select  
One

Forward



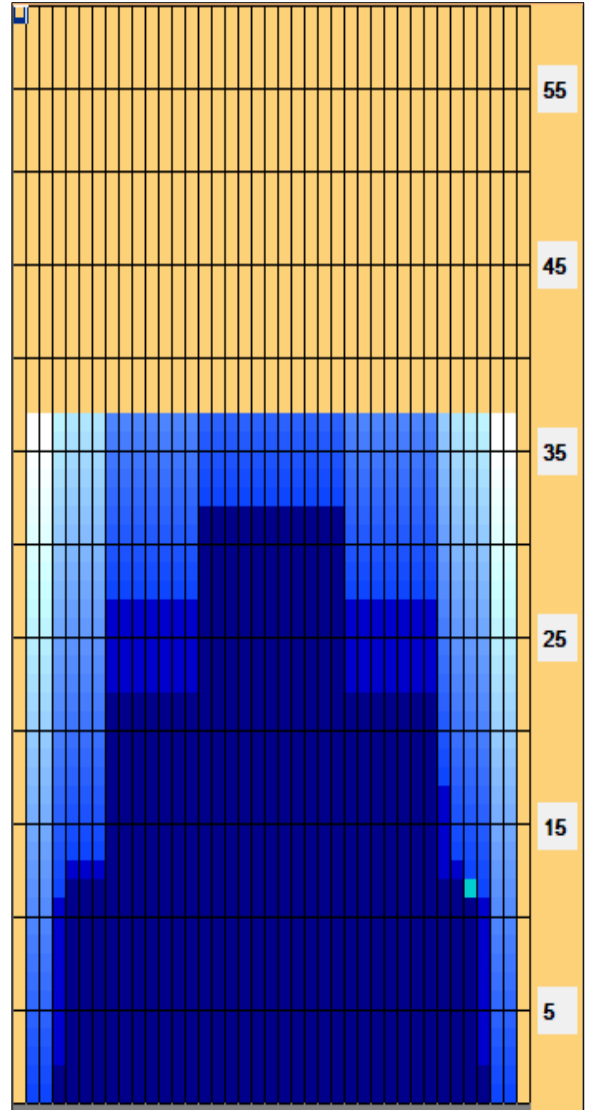
Reverse



Combined



Buff



Item	3L-7L:18L-18R	8L-12L:18L-18R	13L-17L:18L-18R	18L-18R:17R-13R	18L-18R:12R-8R	18L-18R:7R-3R
Description	Outside Track:Middle	Middle Track:Middle	Inside Track:Middle	Middle: Inside Track	Middle:Middle Track	Middle:Outside Track
Track Zone Ratio	3.75	1.26	1.09	1.09	1.26	3.64

